

# Greenbone

## Security Manager

x-ray your network



The **Greenbone Security Manager 550** is a dedicated Vulnerability Management security appliance. It integrates transparently into your existing defense management.

With a choice of front-ends, security scans can give you full visibility of vulnerabilities in your network. The scan also identifies potential breaches of your corporate security policy and regulations.



### Benefits

- Turn-key solution: operational within 10 minutes
- Powerful appliance operating system *Greenbone OS* with command line administration based on a comprehensive security design
- Integrates the *Greenbone Security Feed* with over 28,000 Network Vulnerability Tests, automatically updated daily with the newest threat detection routines
- Integrated Backup, Restore, Snapshot and Update
- Integrates *Greenbone Security Assistant* as central web interface
- No limitation on number of target IPs (effective number depends on scan pattern and scanned systems)
- Subscription is a flat-rate and includes exchange of defect hardware as well as access to the *Greenbone Security Feed*, feature updates and support

### Specifications



#### Dimensions

- 427mm x 480mm x 44mm

#### Certifications

- CE
- FCC Class A

#### Environment

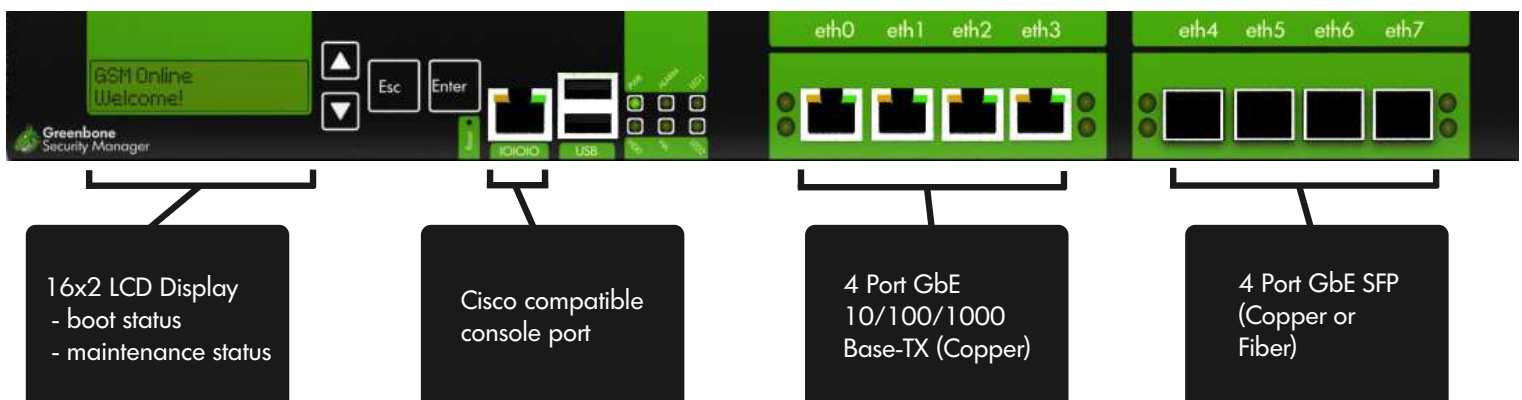
- Operating temperature:  
0° to 40°C (32° to 104°F)
- Storage temperature:  
-20° to 80°C (-4° to 176°F)
- Humidity: 10% to 90%  
(non-condensing)

#### Connectivity

- 4 Port GbE  
10/100/1000 Base-TX (Copper)
- 4 Port GbE SFP  
(Copper or Fiber)
- 1 Port Serial Console RS-232

#### Construction

- 1U rack mount chassis, heavy-duty steel
- 16x2 character LCD display



# Greenbone Security Manager

x-ray your network



## Supported standards

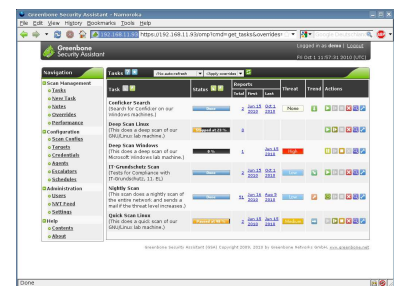
- Network integration: SMTP (Email), SNMP, SysLog, LDAP, NTP, DHCP, IPv4/IPv6
- Vulnerability detection: CVE, CPE, CVSS, OVAL
- Network scans: WMI, LDAP, HTTP, SMB, SSH, TCP, UDP, ...
- Policies: IT-Grundschutz, PCI-DSS, ISO 27001



## Web-based interface (HTTPS)

- Scan tasks management with notes and false-positive marking
- Multi-user support
- Clustered and distributed scanning via master-slave mode
- Report browsing aided by filtering, sorting, annotating and risk scoring
- Plugin framework for reports: XML, PDF, ...
- Appliance performance overview

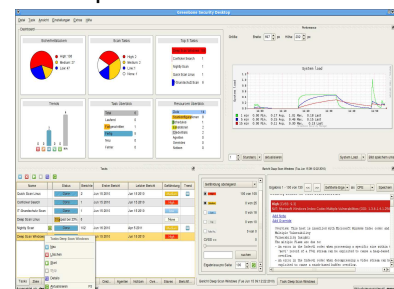
## Web



## Remote control (SSL-secured OMP)

- OpenVAS Management Protocol (OMP)
- All user actions of web-based interface available
- Supported by desktop applications
- Automated via scriptable command line tools

## Desktop

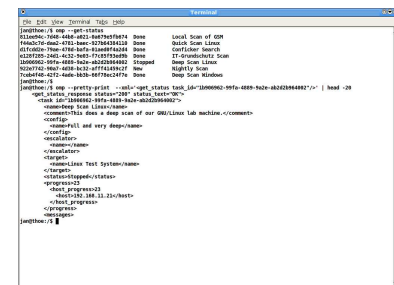


## Administrative console interface

(available as shell via SSHv2 or RS232)

- Network integration configuration
- Backup, Restore, Snapshot, Factory Reset, Update

## Command line interface



## Scan applications (approved and customized versions)

- Scan Engine and Framework: OpenVAS with integrated *Greenbone Security Feed*
- Additional scan tools: Nmap, w3af



Neuer Graben 17  
49074 Osnabrück  
Germany

Telefon: +49-541-335084-0  
Fax: +49-541-335084-99  
Email: [info@greenbone.net](mailto:info@greenbone.net)  
Web: [www.greenbone.net](http://www.greenbone.net)

Notes / Your Greenbone Security Solutions Partner: