

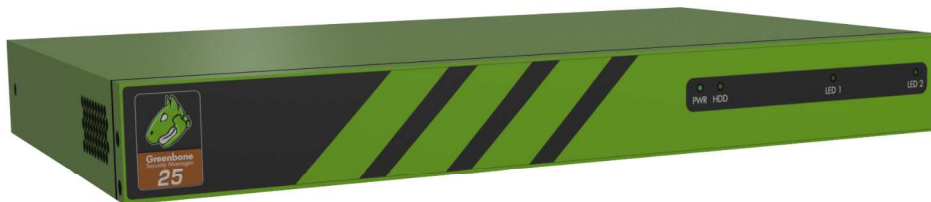
Greenbone Security Manager

x-ray your network



The **Greenbone Security Manager 25** is a dedicated Vulnerability Management security appliance. It integrates transparently into your existing defense management and acts in network structures as scan sensor for midrange or enterprise units of the Greenbone Security Manager product line.

The scan sensor is coupled with a master unit with a secure and simple user interface and afterwards is fully controlled by the master unit. Security scans therefore give you full visibility of vulnerabilities in small separate or remote sub-networks.



Benefits

- Turn-key solution: operational within 10 minutes
- Powerful appliance operating system *Greenbone OS* with command line administration based on a comprehensive security design
- Integrates the *Greenbone Security Feed* with over 25,000 Network Vulnerability Tests, automatically updated daily with the newest threat detection routines
- Integrated Update
- No limitation on number of target IPs (effective number depends on scan pattern and scanned systems)
- Subscription is a flat-rate and includes exchange of defect hardware as well as access to the *Greenbone Security Feed*, feature updates and support

Specifications



Dimensions

- 370mm x 225mm x 44mm

Certifications

- CE

Environment

- Operating temperature:
0° to 45°C (32° to 113°F)
- Storage temperature:
-20° to 80°C (-4° to 176°F)
- Humidity: 10% to 90%
(non-condensing)

Connectivity

- 4 Port GbE
10/100/1000 Base-TX (Copper)
- 1 Port Serial Console RS-232

Construction

- Compact chassis, heavy-duty steel
- Rackmount kit optional



Greenbone Security Manager

x-ray your network



Supported standards

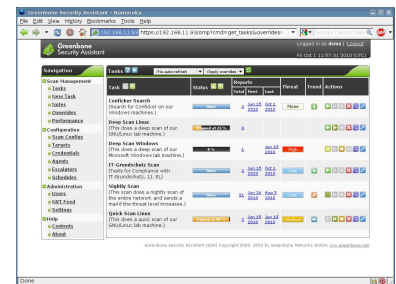
- Network integration: SMTP (Email), SNMP, SysLog, LDAP, NTP, DHCP, IPv4/IPv6
- Vulnerability detection: CVE, CPE, CVSS, OVAL
- Network scans: WMI, LDAP, HTTP, SMB, SSH, TCP, UDP, ...
- Policies: IT-Grundschutz, PCI-DSS, ISO 27001



Web-based interface (HTTPS)

- Scan tasks management with notes and false-positive marking
- Multi-user support
- Clustered and distributed scanning via master-slave mode
- Report browsing aided by filtering, sorting, annotating and risk scoring
- Plugin framework for reports: XML, PDF, ...
- Appliance performance overview

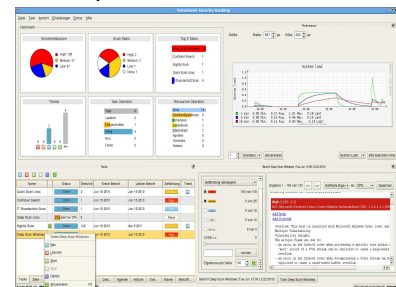
Web



Remote control (SSL-secured OMP)

- OpenVAS Management Protocol (OMP)
- All user actions of web-based interface available
- Supported by desktop applications
- Automated via scriptable command line tools

Desktop

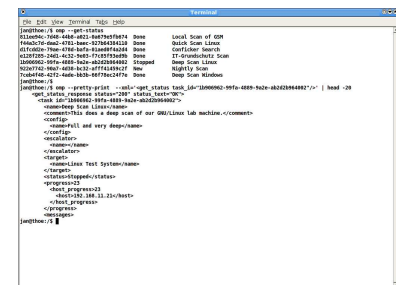


Administrative console interface

(available as shell via SSHv2 or RS232)

- Network integration configuration
- Backup, Restore, Snapshot, Factory Reset, Update

Command line interface



Scan applications (approved and customized versions)

- Scan Engine and Framework: OpenVAS with integrated *Greenbone Security Feed*
- Additional scan tools: Nmap, w3af



Neuer Graben 17
49074 Osnabrück
Germany

Telefon: +49-541-335084-0
Fax: +49-541-335084-99
Email: info@greenbone.net
Web: www.greenbone.net

Notes / Your Greenbone Security Solutions Partner: