

MIMESweeper™ for SMTP 5.3

When you need to fully protect a complex e-mail infrastructure

MIMESweeper for SMTP e-mail software is an extremely sophisticated e-mail management and control system. No other e-mail solution addresses so comprehensively the complex policy, processes and procedures that larger distributed enterprises face, or provides the flexibility to tailor day-to-day operational management of your e-mail infrastructure to your specific organizational needs.

MIMESweeper for SMTP is the result of over twenty years experience at Clearswift in developing e-mail systems for some of the largest and most demanding organizations in the world, many of them household names that jealously guard their reputations and business integrity and who understand the necessity of having the highest standards of corporate e-mail security.

This unique pedigree makes it the ideal solution for organizations looking to fully protect their e-mail communications while ensuring that their productivity, legal and compliance goals are fully met.

Simplifying complex e-mail infrastructures

MIMESweeper for SMTP 5.3 has been specifically developed for geographically dispersed enterprises who have complex e-mail infrastructures and who need to operate regionalized enforcement of e-mail policies, prevent inter and intra company e-mail abuse and stop e-mail data loss and leakage.

The underlying design of our solution encourages cost savings through e-mail gateway infrastructure consolidation while offering the flexibility and scalability, through its service orientated architecture and multi-language support, to accommodate a distributed enterprise. It makes the management of secure e-mail operations in many countries, while allowing for the sensitivity of local laws and customs and accommodating centralized or regionalized control - very straightforward.



Straightforward management of multi-country policies

MIMESweeper for SMTP lets organizations set policy for individuals, teams, business units, divisions and regions all related to your central policy goals but sensitive to local variations in business practice. For instance, implementing a blanket policy for viruses but varying the spam controls by country to comply with local laws, or varying document control policies not just by job title, division or department but also by an identifiable project group - so for instance an M&A team are protected by a different policy during their brief time together, or the Treasury department are restricted on the e-mails they send to Traders.

The Issues:

Gateway Protection: Viruses, Trojans and malicious code are all transmitted by e-mail

Productivity: Spam kills user and administrator productivity and now accounts for over 90% of the mail e-mail sent to enterprises. To reduce IT administration, and be scalable, policy violations need to be delegated to line of business specialist expertise.

Legal liability: Inappropriate e-mail may be inbound, outbound or internal and it can all lead to litigation and reputational damage.

Compliance: Regulations make every organization accountable for how information is shared, stored and distributed between senders and recipients. Not being able to apply policy on an e-mail's routing and payload means an organization will never be compliant. And, if you cannot monitor, track and apply audit trails to all messages proving compliance is impossible too.

MIMESweeper™ advantage:

- Exceptional scalability, easily manages 100,000+ users
- Inherited policy framework provides exceptional flexibility
- Easy management of different multi-regional, country and local policies
- MIMESweeper, best-of-breed e-mail content filtering controls for complete sender, recipient and payload analysis for effective data loss prevention and message routing control
- Sensitive document data loss prevention with Clearswift CONTENTsafe™
- Auto-updating, low maintenance security technologies
- Single and/or dual layer anti-virus/malware protection
- >99.5 spam e-mail detection with low false positives
- MIMESweeper zero-day payload detection
- Secures inbound, outbound and internal e-mail message flows (Exchange & Domino)
- Personal Message Manager productive e-mail quarantine management
- Intuitive web based management console
- Roles based management and workflow processes
- Fully consolidated management across multiple gateways
- Comprehensive reporting
- Full message tracking, monitoring, alerting and auditing
- Low Total Cost of Ownership

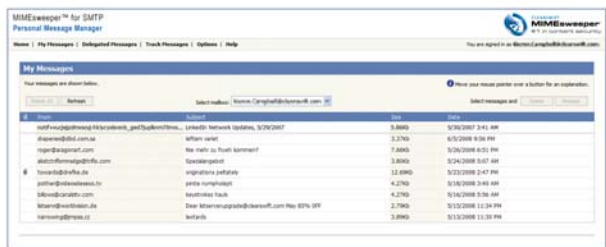
Scaling complex e-mail infrastructures

MIMESweeper for SMTP recognizes that not all the issues of managing a complex e-mail infrastructure should be dealt with by IT and the mail administration team - so we offer far more.

Our scalable and robust roles base management system allows you to place the control of valuable or sensitive information away from IT and into the hands of the information policy specialists and professionals you employ. So a policy transgression, according to its severity or type, is easily delegated to HR, Compliance, Legal, Security or any other nominated decision maker to deal with along with immediate access to the relevant violation information.

Releasing suspected spam or user-requested categories of e-mail from quarantine also costs valuable IT administration time and resources. So the option exists through our policy driven Personal Message Manager to let users manage their own quarantined e-mail - thereby devolving this onerous administration task, reducing operational costs and speeding up e-mail delivery.

MIMESweeper for SMTP's unique hierarchical, roles based, policy-driven content filtering approach to e-mail security ensures policy is always enforced, acted upon, and that every message is fully tracked and audited, no matter how large an organization you have.



Personal Message Manager reduces administration and speeds up e-mail delivery

Securing complex e-mail infrastructures

MIMESweeper for SMTP comes with the Edge Server™ that sits in the DMZ to stop spam before it enters your e-mail infrastructure. With its optional auto-updating Kaspersky anti-virus engine you also have the choice to scan for malware and phishing attacks here too. Alternatively, you may use your own in-house anti-virus to do the scanning at the next layer in the MIMESweeper for SMTP infrastructure - we directly support versions of Authentium, Avira, Command, F-Secure, Kaspersky, Norman, Sophos and Symantec. Other anti-virus vendors may also be accommodated via command line integration. The choice also exists to double layer your anti-virus protection by using Kaspersky on the Edge Server and your in-house anti-virus.

The Edge Server delivers a whole range of security benefits to make e-mail security management more effective:

- A >99.5% plus spam detection with a minimal false positives rate
- A combination of auto-updating spam defenses including Clearswift's SpamLogic™ engine, the Clearswift TRUSTmanager™ sender reputation service and the ThreatLab LIVE™ service to mitigate new and emerging spam threats
- An Edge Server PMM (Personal Message Manager) quarantine area that may be operated here, or within your safe network, or at both locations
- Fully automated anti-virus and malware protection with the optional Kaspersky anti-virus - always in the top three of independently tested anti-virus solutions)
- Transport Layer Security (TLS) for easy gateway to gateway e-mail encryption policy enforcement

But the real architectural benefit of the Edge Server is that its gateway deployment means only cleaned or user requested e-mail enters the DMZ. Your network is freed from spam traffic, which lessens the load on and increases the efficiency of your mail servers while removing the need to archive spam and waste valuable storage resources.

What's new in Version 5.3?

- Microsoft Exchange 2007 support
- Microsoft Office 2007 and Open Office document support
- Specific lexical scanning area controls for document headers, footers and body
- Increased Encrypted, Multi-media, Image and Message type detection
- New Data Leak controls covering PCI, PII, HIPAA, SEC, and SOX lists
- More granular roles based administration of up to 1,200 multiple email domains
- Increased Edge Server management integration
- PMM enhancements including Swedish, Russian, Polish, Slovenian, Czech, Greek, Dutch and Danish language support



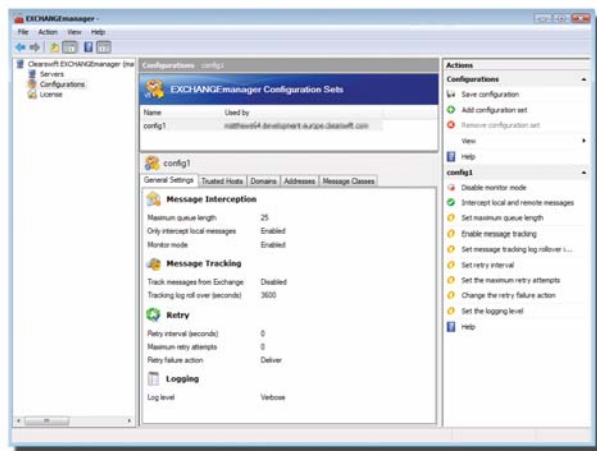
Spam detection of over 99.5% with minimal false positives

Controlling the flow of e-mail in a complex infrastructure

MIMESweeper for SMTP applies policy no matter where e-mail traffic is being sent or received. It comes with the option of our EXCHANGEmanager™ interceptor module to apply policy and filter all your internal e-mail traffic as thoroughly as inbound or outbound traffic.

Image Scanning with IMAGEManager™

MIMESweeper for SMTP also offers the optional IMAGEManager™ plug-in to analyze any images in your e-mail and apply policy to those images within an e-mail, or embedded in an attached file. It also has the facility for images to be added to its image database with specific policy rules incorporated over their transfer permissions by e-mail.



EXCHANGEmanager™ cluster aware integration into Exchange System Manager

Clearswift CONTENTsafe™

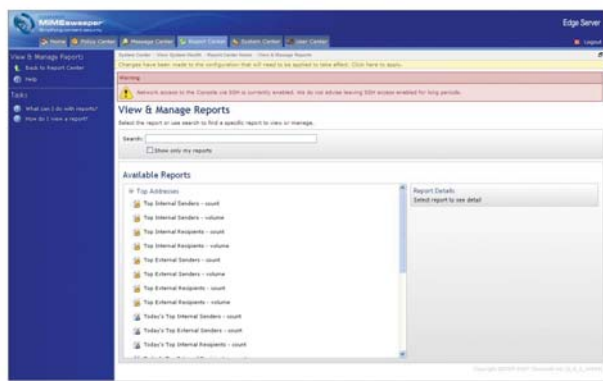
And, last but not least, there is Clearswift CONTENTsafe a way of ensuring that all sensitive information is registered and that no part of it may be communicated via e-mail to those with no clearance to do so.

Understanding payload exchanges

The depth of document payload control within MIMESweeper for SMTP is second to none with its document and file recognition and disassembly code generally considered to be the very best in the e-mail content filtering field.

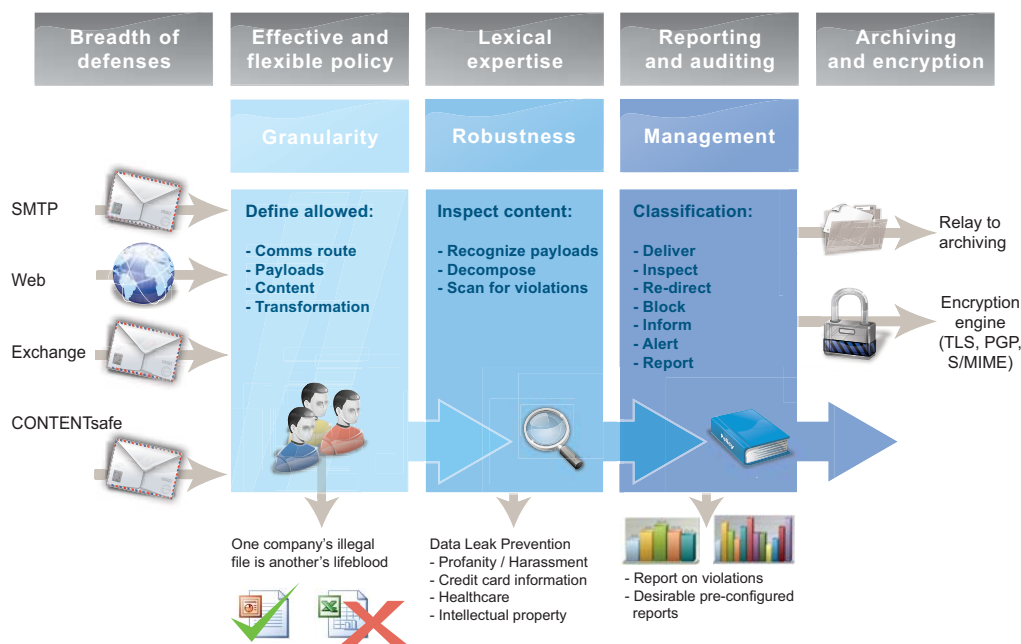
If somebody writes something anywhere in a document, MIMESweeper finds it, no matter how it's hidden or buried inside other files. The MIMESweeper engine is able to disassemble and inspect the entire contents of hundreds of different file types as well as recognize watermarks, IPR, PCI, PII and hundreds of other protected document tags. The Lexical analysis engine may be tuned to look at predefined HIPAA, SEC, and SOX lists as well as isolate key words in document headers, footers and body text. Combined with state of the art search and fingerprinting tools, and comprehensive inspection and analysis, your control over sensitive data information assets passing through your e-mail systems is extremely effective.

The MIMESweeper solution provides dual level protection controls over protected documents, stopping them as they move about inside your company and at the gateway. Every single message is tracked, monitored, filtered and audited. The capability to monitor and audit e-mail message flows is supported by sophisticated reporting tools that track information breaches and identify the individuals and departments that have not complied with policy. Automated alerting allows an immediate response to violations, aided by automatic delegation into the hands of the right information policy specialist nominated to handle that violation type.



View and Manage reports

MIMESweeper™ for SMTP 5.3



No e-mail content filter is as complete as MIMESweeper™

The ultimate e-mail security solution

MIMESweeper for SMTP provides total control over your e-mail environment by coupling together the best security and content filtering technologies into one seamless solution. Together these tools help you to standardize your communication policies, enforce appropriate e-mail interactions, protect your sensitive documents and ensure that your reputation is not damaged by mistakes, or attempted malicious data leakage activity.

And, unlike other data loss and prevention technologies, MIMESweeper for SMTP provides rapid e-mail messaging protection with minimal impact on your existing business practices and an immediate return on your e-mail infrastructure investment. No other e-mail security solution offers such highly flexible deployment capabilities, or is designed to enhance and robustly enforce your existing regional social and legal rules so easily whilst offering sophisticated global roles based management controls.

Free trial, or find out more?

A free trial of MIMESweeper for SMTP and all its components is available for download from the Clearswift website at:

<http://www.clearswift.com/products/msw/smtp/eval/default.aspx>

On the same web page you will also find additional information and demonstrations of the Personal Message Manager, Web Management UI and the Policy Editor functions plus the documentation you will need set-up your evaluation

Alternatively please call us directly at one of our offices below.

Contact Clearswift

United States

161 Gaither Drive, Centerpointe, Suite 101
Mt. Laurel, NJ 08054, UNITED STATES
Tel: +1 800 982 6109 | Fax: +1 888-888-6884

United Kingdom

1310 Waterside, Arlington Business Park, Theale,
Reading, Berkshire, RG7 4SA
Tel: +44 (0) 11 8903 8903 | Fax: +44 (0) 11 8903 9000

Spain

Cerro de los Gamos 1, Edif. 1
28224 Pozuelo de Alarcón, Madrid
Tel: +34 91 7901219 / +34 91 7901220 | Fax: +34 91 7901112

Germany

Amsinckstrasse 67, 20097 Hamburg
Tel: +49 40 23 999 0 | Fax: +49 40 23 999 100

Australia

Level 5, Suite 504, 165 Walker Street,
North Sydney, New South Wales, 2060
Tel: +61 2 9424 1200 | Fax: +61 2 9424 1201

Japan

Hanai Bldg. 7F, 1-2-9, Shiba Kouen Minato-ku
Tokyo 105-0011
Tel: +81 (3) 5777 2248 | Fax: +81 (3) 5777 2249