

**DATA SHEET**

# CLEARPASS ONGUARD™

Enterprise-class endpoint protection, posture assessments and health checks

ClearPass OnGuard™ agents perform advanced endpoint posture assessments, on leading computer operating systems to ensure compliance is met before devices connect.

Running on the ClearPass Policy Manager platform, the advanced network access control (NAC) and network access protection (NAP) framework in ClearPass OnGuard offers exceptional safeguards against vulnerabilities.

The following operating systems and versions are supported:

- Microsoft – Support for Windows 8 and 7, and Vista.
- Apple – Support for Mac OS X 10.7 and above.
- Linux – Support for Red Hat Enterprise Linux 4 and above, Community Enterprise Operating System (CentOS) 4 and above, Fedora Core 5 and above, and SUSE Linux 10.x.

Supported agents:

	<b>OnGuard Persistent Agent</b>	<b>OnGuard Dissolvable Agent</b>	<b>Microsoft's NAP Agent</b>
Microsoft	X	X	X
Apple	X	X	
Linux		X	

\* Note: Auto-remediation only supported by persistent agents

## THE CLEARPASS ADVANTAGE

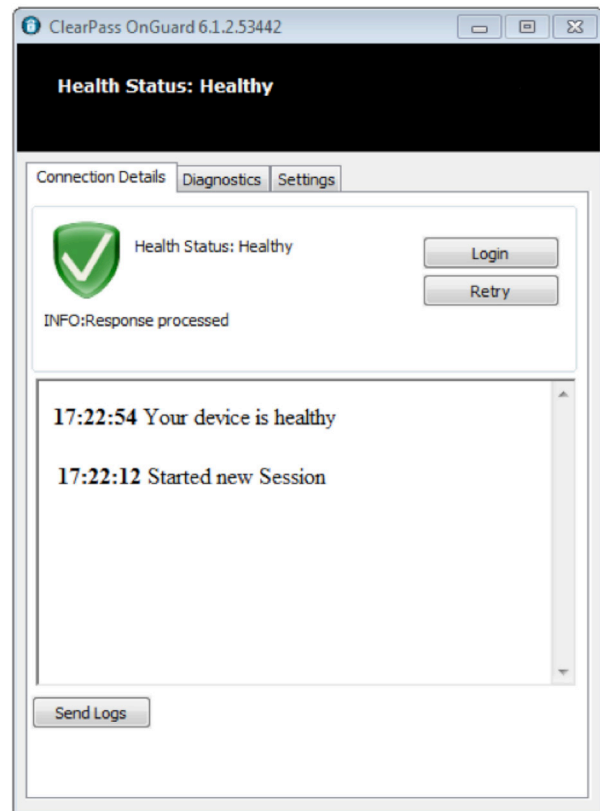
In addition to anti-virus, anti-spyware and personal firewall audits performed by traditional NAC and NAP products, OnGuard agents can perform additional posture and health checks, to ensure a greater level of endpoint compliance.

### Persistent and dissolvable agents

The difference between the two is that the persistent agent provides nonstop monitoring and automatic remediation and control. When running persistent OnGuard agents, ClearPass Policy Manager can centrally send system-wide notifications and alerts, and allow or deny network access. The persistent agent also supports auto and manual remediation.

## KEY FEATURES

- Enhanced capabilities for endpoint compliance and control, including NAC and NAP
- Supports Microsoft, Apple, and Linux operating systems
- Anti-virus, anti-spyware, firewall checks and more
- Optional auto-remediation and quarantine capabilities
- System-wide endpoint messaging, notifications and session control
- Centrally view the online status of all devices from the ClearPass Policy Manager platform



Successful wireless authentication of a Windows 7 device.

Alternatively, the web-based dissolvable agent is ideal for personal, non IT-issued devices that connect via a captive portal and do not allow agents to be permanently installed. A one-time check at login ensures policy compliance. Devices not meeting compliance can be redirected to a captive portal for manual remediation.

Once the browser page used during authentication is closed, the dissolvable agent is removed leaving no trace.

### Automatic remediation

If unhealthy endpoints do not meet compliance requirements, the user receives a message about the endpoint status and instructions on how to achieve compliance if auto-remediation is not used.

Messages can include reasons for remediation, links to helpful URLs and helpdesk contact information. ClearPass persistent agents provide the same message and remediation capabilities for 802.1X, non-802.1X, and combined environments.

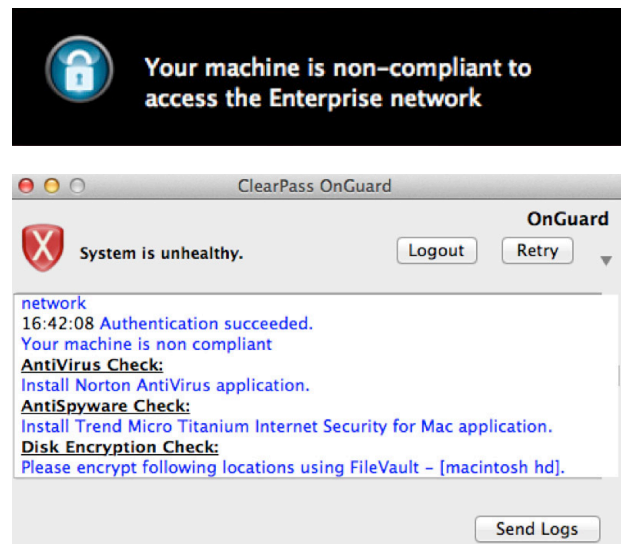
### Extending NAP capabilities

For added protection, ClearPass OnGuard health checks can check for more granular data than with the standard Microsoft NAP agent. OnGuard can be used to assess product-specific attributes, such as product, engine and data file versions for AntiVirus applications.

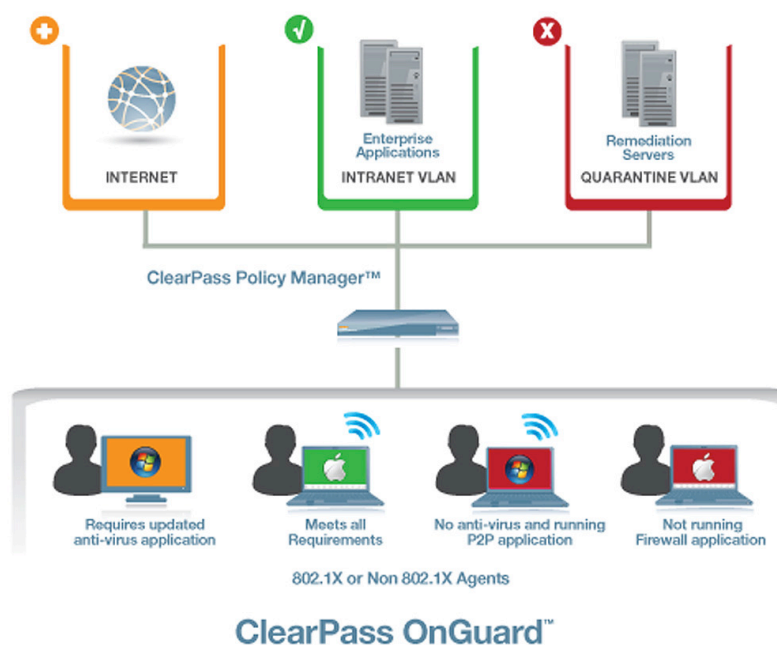
The ClearPass solution uses the NAP compatible protocol to facilitate using the Policy Manager as the NAP server, as well as for network enforcement policies.

### IT-managed and BYOD endpoint compliance

OnGuard persistent and dissolvable agents can be used together in environments where endpoints are owned by the organization, employees and visitors. This ensures that all devices are assessed and granted proper privileges before accessing the network.



Detailed Mac OS X quarantine messages.



Persistent and dissolvable agents can be used for 802.1X and non-802.1X endpoint health checks.

## Complete endpoint visibility

To simplify troubleshooting, endpoint control and compliance reporting, ClearPass Policy Manager offers the ability to centrally managed health-check settings and policies. Views of ClearPass OnGuard activity, including user and device data show information about each device that connects using OnGuard agents.

## Real-time endpoint compliance

Depending on operating system type OnGuard performs the following level of posture and health checks.

	Windows	Mac OS X	Linux
Installed Applications	X	X	
AntiVirus	X	X	X
AntiSpyware	X	X	
Firewall	X	X	
Disk Encryption	X	X	
Network Connections	X	X	
Processes	X	X	
Patch Management	X	X	
Peer to Peer	X	X	
Services	X	X	X
Virtual Machines	X	X	
Windows Hotfixes	X		
USB Devices	X	X	

\* Chart represents ClearPass version 6.2 functionality.

\*\* Disclaimer: Not all checks are supported across operating systems and agent type.

## ORDERING GUIDANCE

ClearPass OnGuard can be ordered via dedicated OnGuard-only subscription that includes ArubaCare support or perpetual licenses.

Available enterprise options enable organizations to flexibly use the licenses for ClearPass OnGuard, Onboard or Guest.

Ordering ClearPass OnGuard involves the following three steps:

1. Determine the number of unique computer endpoints that will have posture/health checks performed prior to network access within your environment.
2. Choose the appropriate ClearPass Policy Manager hardware or virtual appliance to accommodate the total number from above. The Enterprise Starter Bundle that contains 25 licenses can be used.
3. Select the remaining capacity needed to accommodate the total number of endpoints using the OnGuard part numbers. Anything over the capacity of a base appliance will require the purchase of a second ClearPass Policy Manager appliance.

The screenshot shows the ClearPass Policy Manager interface. The main window displays 'OnGuard Activity' for January 18, 2012, at 11:12:54 PST. The activity is filtered by 'User' containing 'david'. The table below shows the details of the activity:

#	User	Host MAC	Host IP	Host OS	Status	Date and Time	Authentication Records
1.	david	00-87-34-58-75-99	10.6.52.42	Microsoft Windows 7	●	2012/01/17 10:32:14	<a href="#">View</a>
2.	jjack	01-75-45-23-89-90	10.6.52.55	Microsoft Windows 7	●	2012/01/17 11:24:09	<a href="#">View</a>
3.	john	00-1D-09-D1-59-44	10.6.50.145	Microsoft Windows 7	●	2012/01/17 07:34:00	<a href="#">View</a>
4.	karen	00-1D-08-64-32-45	10.6.50.18	Microsoft Vista 6.0	●	2012/01/17 10:34:13	<a href="#">View</a>
5.	trent	00-14-06-21-44-92	10.6.52.190	Microsoft Vista 6.0	●	2012/01/17 06:34:13	<a href="#">View</a>
6.	venkat	58-94-6B-32-82-40	10.6.52.75	Microsoft Windows 7	●	2012/01/17 11:28:45	<a href="#">View</a>

The interface also shows a 'Showing 1-6 of 6' indicator and buttons for 'Send Message' and 'Bounce'.

Centralized view of endpoints OnGuard activity.

Example: To support the provisioning of 2,000 devices, make sure that ClearPass Policy Manager is sized to accommodate 2,000 devices and that users will authenticate via 802.1X or MAC auth.

Purchase the following:

- ClearPass Hardware Appliance – CP-HA-5K
- ClearPass OnGuard – 2 X LIC-CP-OG-1K

Additional ClearPass OnGuard capacity can be purchased at any time to meet growth demands.

<b>ORDERING INFORMATION*</b>	
<b>Part Number</b>	<b>Description</b>
LIC-CP-OG-100	OnGuard license for Aruba ClearPass Policy Manager – 100 endpoints
LIC-CP-OG-500	OnGuard license for Aruba ClearPass Policy Manager – 500 endpoints
LIC-CP-OG-1K	OnGuard license for Aruba ClearPass Policy Manager – 1,000 endpoints
LIC-CP-OG-2500	OnGuard license for Aruba ClearPass Policy Manager – 2,500 endpoints
LIC-CP-OG-5K	OnGuard license for Aruba ClearPass Policy Manager – 5,000 endpoints
LIC-CP-OG-10K	OnGuard license for Aruba ClearPass Policy Manager – 10,000 endpoints
LIC-CP-OG-25K	OnGuard license for Aruba ClearPass Policy Manager – 25,000 endpoints
LIC-CP-OG-50K	OnGuard license for Aruba ClearPass Policy Manager – 50,000 endpoints
LIC-CP-OG-100K	OnGuard license for Aruba ClearPass Policy Manager – 100,000 endpoints
<b>Enterprise Perpetual Part Number</b>	<b>Description</b>
LIC-CP-EN-xxx*	Enterprise license for ClearPass Policy Manager
<b>OnGuard Subscription Part Numbers</b>	<b>Description</b>
SUB1-CP-OG-xxx*	1-year OnGuard subscription license for ClearPass Policy Manager (includes ArubaCare support)
SUB3-CP-OG-xxx*	3-year OnGuard subscription license for ClearPass Policy Manager (includes ArubaCare support)
SUB5-CP-OG-xxx*	5-year OnGuard subscription license for ClearPass Policy Manager (includes ArubaCare support)
<b>Enterprise Subscription Part Numbers</b>	<b>Description</b>
SUB1-CP-EN-xxx*	1-year enterprise subscription license for ClearPass Policy Manager (includes ArubaCare support)
SUB3-CP-EN-xxx*	3-year enterprise subscription license for ClearPass Policy Manager (includes ArubaCare support)
SUB5-CP-EN-xxx*	5-year enterprise subscription license for ClearPass Policy Manager (includes ArubaCare support)
<b>Warranty</b>	
Software	90 days**

\* Subscription and enterprise licenses can be purchased in 1-, 3- or 5-year increments for 100, 500, 1,000, 2,500, 5,000, 10,000, 25,000, 50,000, and 100,000 endpoints

\*\* Extended with support contract



1344 CROSSMAN AVE | SUNNYVALE, CA 94089  
1.866.55.ARUBA | T: 1.408.227.4500 | FAX: 1.408.227.4550 | INFO@ARUBANETWORKS.COM