

SAV Interface allows users to benefit from the wide range of industry-standard firewalls, gateways and similar solutions which have been designed to integrate with powerful Sophos virus protection. It satisfies the requirement of high-bandwidth environments for minimal performance overhead and, through its high-speed channel into the Sophos virus engine, provides detection of all virus types. SAV Interface incorporates disinfection capability and gives comprehensive information when a virus is found.

SAV Interface's integration capability also allows Internet Service Providers (ISPs) and Application Service Providers (ASPs) to offer integrated protection to their clients.

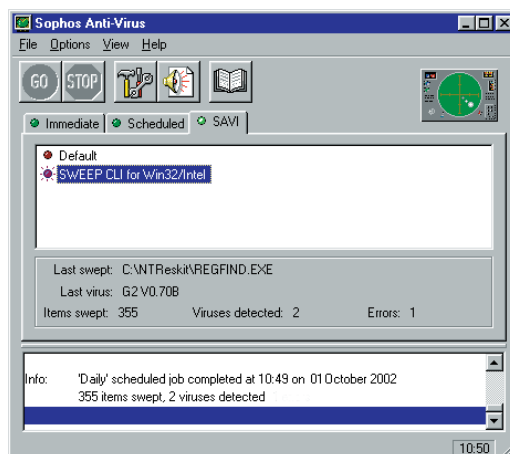
How it works

SAV Interface is installed as part of Sophos Anti-Virus.

It is implemented as a COM-compliant DLL on Windows NT, and as shared libraries on other platforms. It requires only one copy of the virus information database to service all requests and does away with the frequent loading and reinitialisation required by command-line based scanners. This provides considerable improvement in performance.

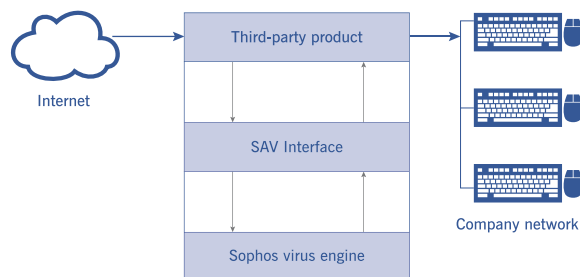
Features and benefits

- Provides software vendors, ISPs and ASPs with fast-track integration with Sophos Anti-Virus.
- Allows compliant firewall, gateway and backup applications to monitor email, internet downloads and FTP downloads.
- Detects and disinfects macro viruses, boot sector viruses and PE executable viruses.
- Detects viruses in compressed attachments including recursive archives.
- Detects viruses inside MIME-encoded messages.
- Detects polymorphic viruses using Sophos's advanced Virus Description Language and a built-in code emulator.
- Improves performance significantly over traditional command line virus scanners.
- Eliminates excess memory usage by using a single, multi-threading copy of the virus detection engine to process all requests.
- Ensures transparent update of all SAV Interface clients when Sophos Anti-Virus is updated.
- Allows constant automated web-based download of the latest virus updates via Sophos's Enterprise Manager software.
- Receives small (about 5 KB) updates.
- Includes 24-hour support, 365 days a year.



Sophos Anti-Virus for Windows NT/2000/XP/2003 monitoring a SAV Interface client application

Function	Programming interface to virus detection engine.
Systems supported	Windows NT/2000/XP/2003; Windows 95/98/Me; Mac OS X; Linux; Solaris; FreeBSD HP-UX; Various other Unix flavours; OpenVMS, OS/2.
Mode of operation	Windows, OS/2: COM-compliant Dynamic Link Library (DLL). Mac OS X, Framework. Unix platforms, OpenVMS: shared library, supplied in binary form.
Interface	COM-based C/C++ interface across all versions for cross-platform consistency.
Using the interface	Once Sophos Anti-Virus is installed, client applications can call the SAVI library.
Installation	Installed as part of Sophos Anti-Virus package.
Updating SAV Interface clients	SAV Interface clients (i.e. third-party products) are updated automatically when Sophos Anti-Virus is updated. Can be customised by client product.
System requirements	
Windows	Intel 80486 or compatible processor; Alpha processor.
Mac OS X	Mac G3, G4, G5; iMac; eMac; PowerBook G3, G4; iBook.
Linux	Intel 80486 or compatible processor; Alpha; PowerPC. Any distribution with kernel version 2.x.x or higher, libc6 or libc5 (Intel only).
FreeBSD	Intel 80486 or compatible processor; FreeBSD 3.0 or higher.
HP-UX	Version 10.20 or higher.
AIX	Version 4.2 or higher.
Solaris	Sun SPARC processor; Intel 80486 or compatible processor; Sun OS 5.6 or higher; Solaris 7 or higher.
Tru64 UNIX	Digital UNIX version 4.0D or higher; Tru64 UNIX 5 or higher.
SCO	SCO UnixWare 7.0 or higher; SCO OpenServer 5 or higher.
OS/2	OS/2 Warp version 3.0 or higher.
OpenVMS	VAX version 5 or higher; Alpha version 1 or higher.
Memory requirements	15–20 MB RAM.
Disk space	Windows: 20–30 MB; Other versions: 8–10 MB.
Scanning speed	20–30 times improvement over use of command-line scanner. Typical file scan time in quick (intelligent scanning) mode <20ms.
Virus alerts	Options depend on client product.
Compliance	A full list of integrators and a developer's toolkit are available at www.sophos.com .



Typical use of SAV Interface at the corporate gateway

Note that users of products that are compliant with SAV Interface should purchase a SAV Interface licence. This can easily be upgraded to other Sophos licences to extend full protection to all key points throughout an organisation.

fs/040701