

SAVAdmin is a graphical management tool which makes the installation, configuration and monitoring of Sophos Anti-Virus (SAV) across a multi-server Windows network fast and controllable. It allows network administrators to deploy Sophos Anti-Virus remotely across an entire multi-site network from a single, central Windows machine. Installations to individual machines or all domains can be performed in one simple operation, without end user intervention.

By reporting which servers or workstations are unprotected or out of date, SAVAdmin provides a security audit facility which reduces the exposure of a business network to virus outbreaks. Any machine identified as not fully protected can be immediately and automatically updated with the latest version of Sophos Anti-Virus.

How it works

SAVAdmin allows remote graphical selection of the servers, desktops and laptops onto which Sophos Anti-Virus is to be installed and administered.

Central installation directories (CIDs) on a networked machine contain distribution copies of Sophos Anti-Virus for Windows. Once the CIDs have been created, all supported Windows computers are installed from them. Running on a Windows machine, SAVAdmin allows the administrator to perform this task remotely.

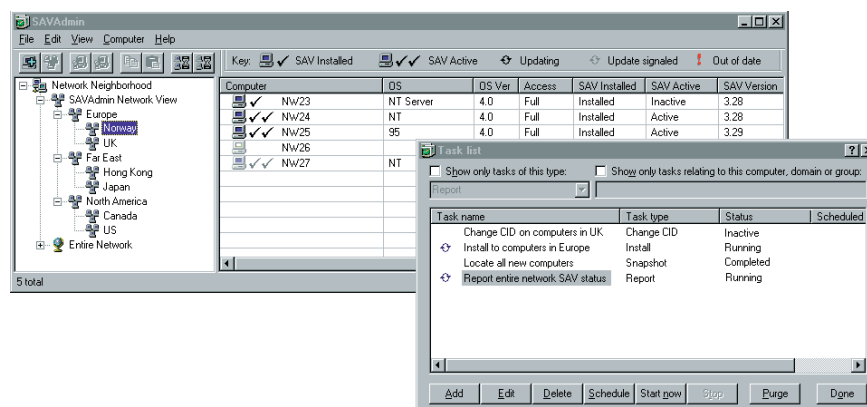
When a CID is subsequently updated, all Windows machines auto-update without user or SAVAdmin intervention. Meanwhile, SAVAdmin can monitor the updates in real-time.

In practice, a network of 1000 or more clients can be updated within five minutes with new virus identity files or product upgrades.

SAVAdmin can be used on its own or in conjunction with Sophos's Enterprise Manager which automatically downloads updates from the web.

Features and benefits

- Provides a networked audit facility for Sophos Anti-Virus with real-time status monitoring of SAV installation, update, operation, version number and virus identities.
- Supports unattended installation of Sophos Anti-Virus across the network.
- Discovers new computers and installs Sophos Anti-Virus on them automatically.
- Replicates central installation directories across the network.
- Can force virus identity updates and software upgrades onto servers and desktops.
- Manages large networks by dividing computers into user-defined groups.
- Allows graphical selection of machines.
- Allows snapshots of networked computers to be stored and recalled.
- Allows displayed information to be sorted and filtered.
- Executes scheduled and immediate tasks.
- Generates status reports.



SAVAdmin: providing graphical distribution management across a Windows network

| | |
|---------------------------------------|--|
| Types of network supported | Any network supported by the Windows operating system and the underlying network protocols. |
| Browsing modes | <p>Live network browsing – locates machines within active domains.</p> <p>Network view – a grouping utility for computer names, allowing machines and hierarchies to be logically structured, and providing information for each entry.</p> |
| Adding machines to group lists | <p>Drag-and-drop and copy-and-paste from the Entire Network list.</p> <p>Import computer list from file.</p> |
| Deployment technique | Minimal push and full pull technology – a proactive technique in which all networked clients take part in a global and also simultaneous installation or update. |
| Initial rollout of SAV | Supported client machines access Sophos Anti-Virus via the “AutoUpgrade account” which has read access to Sophos Anti-Virus in the central installation directory (CID). Sophos Anti-Virus can be installed onto selected machines using the <i>Computer</i> menu within SAVAdmin. (Separate CIDs are required for Windows NT/2000/XP/2003, Windows NT (Alpha) and Windows 95/98/Me machines.) |
| Updating SAV using SAVAdmin | Monthly Sophos Anti-Virus updates and identity files downloaded from the web are placed in the CID, ready for automatic distribution to clients. More details are at www.sophos.com/support/knowledgebase . |
| Monitoring updates | Real-time – machines that are upgrading are marked with an <i>Updating</i> icon. |
| Security | <p>Uses native Windows NT/2000 security including automatic use of the domain trust relationship; however, it uses a special network account with very few access rights and the domain supervisor’s password is not required.</p> <p>Any user can run SAVAdmin and view the status of Sophos Anti-Virus across the network.</p> <p>Administrators with appropriate rights can modify the status of the machines.</p> <p>Explicit log in to a single or series of machines can be used where the domain model is not available e.g. for a workgroup or a NetWare environment.</p> <p>SAVAdmin administers Windows 95/98/Me machines using a locally installed agent (SAVAgent) with very specific functionality limited to monitoring and configuring Sophos Anti-Virus. SAVAgent is protected by a proprietary remote access control algorithm.</p> |
| System requirements | Windows NT/2000. |
| Supported clients | Windows 95/98/Me; Windows NT (Intel or Alpha)/2000/XP/2003. |

30-day evaluation software can be obtained from <http://www.sophos.com/products/>

fs/040702