



MailMonitor for Notes/Domino checks all email traffic passing through Notes email servers, including attachments compressed with Zip and other popular utilities. Virus detection and disinfection are performed by the high-speed Sophos virus engine, which allows central, transparent updating of virus identity files. Comprehensive messaging enables MailMonitor to notify administrators, senders and recipients of any viruses found.

## How it works

The Sophos virus detection engine is installed alongside MailMonitor as part of the MailMonitor installation process.

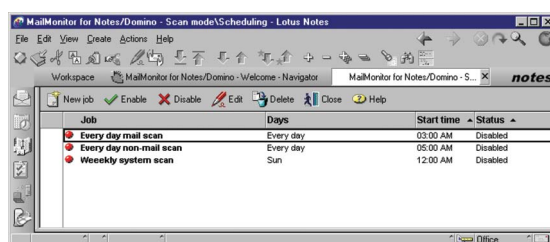
Once installed, MailMonitor intercepts and scans incoming and outgoing email. It operates in three modes:

- **Immediate:** virus scans mailboxes and databases on demand.
- **Scheduled:** virus scans mailboxes and databases on specific days and times.
- **Real-time:** intercepts and scans email attachments as they are sent or received.

Virus-free messages are passed to the mail server, and infected attachments are disinfected, deleted or quarantined.

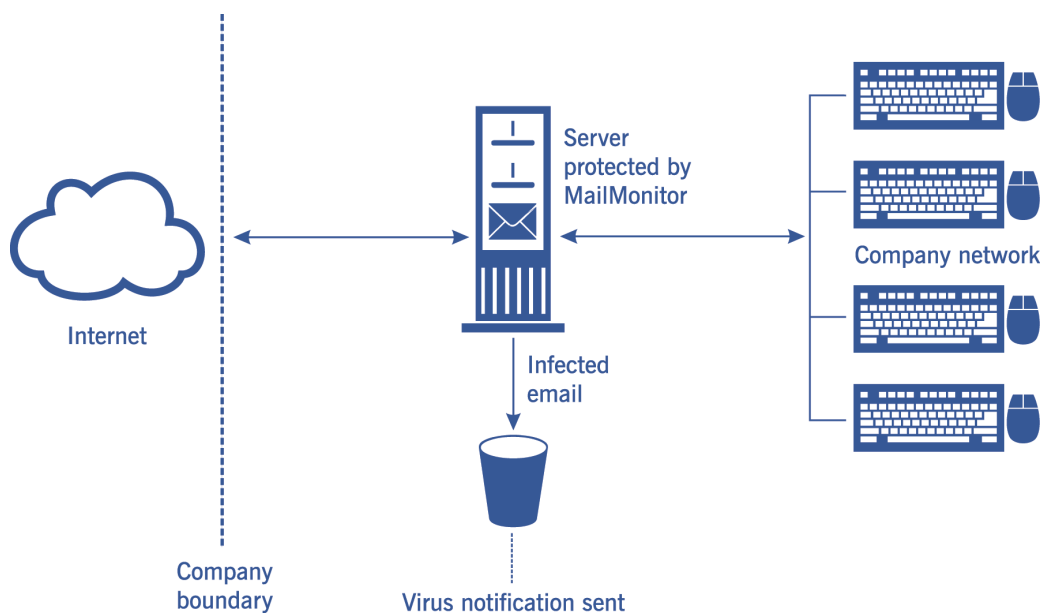
## Features and benefits

- Protects WANs and LANs from viruses at the gateway.
- Detects, disinfects, deletes or quarantines viruses in incoming and outgoing email.
- Scans Notes mailboxes and databases on demand and on schedule.
- Provides automatic centralised reporting of virus incidents.
- Detects viruses in compressed attachments, including recursive archives.
- Detects polymorphic viruses using Sophos's advanced Virus Description Language and a built-in code emulator.
- Alerts administrators, senders and intended recipients on receipt of virus-infected email.
- Allows remote administration.
- Allows automated web-based download of the latest virus updates via Sophos's EM Library.
- Receives small (about 5 KB) updates.
- Is transparent to end users.
- Includes 24-hour support, 365 days a year.



*MailMonitor for Notes/Domino scanning mode*

- Function** Scans all incoming and outgoing email to and from a Notes/Domino server for viruses; scans Notes/Domino databases and mailboxes.
- Mode of operation** Runs as a Notes application.
- Use of the Sophos virus engine** Via SAV Interface.
- Email system requirements** Notes/Domino server R4.5, R4.6x, R5 or R6 with Windows NT 4.0 (Service Pack 6a or higher), or Windows 2000 running on Intel.
- Updates** Automated updates are available via the Sophos management tool, EM Library.  
  
Frequent updates are available via the Sophos website for new viruses detected in the wild, full monthly updates can also be downloaded. In addition, upgrades are sent on CD to all customers.
- Virus alerts** Network administrators can be automatically notified of virus incidents. The senders and recipients of infected email can also be alerted. All virus incidents are logged.



*MailMonitor for Notes/Domino server protection*

30-day evaluation software can be obtained from [www.sophos.com](http://www.sophos.com).

fs/040618