



Check Point Express CI

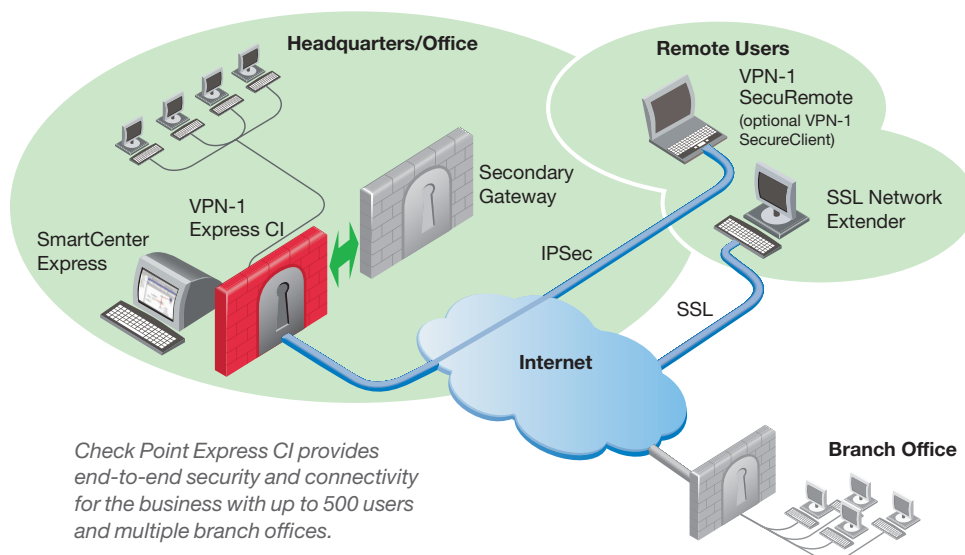
Security you don't have to worry about

YOUR CHALLENGE

Mid-sized businesses face the same security threats as the largest corporations. They need a flexible, secure network infrastructure that stops fast-evolving threats from disrupting operations. They must ensure that email and Web traffic are free from viruses and other attacks that are carried into the network within legitimate traffic. They need to connect branch offices and remote employees to corporate resources. Yet they must provide the same level of service with considerably fewer resources.

OUR SOLUTION

Check Point Express CI™ provides the most intelligent, worry-free security for companies with up to 500 employees and limited resources. The industry's most comprehensive solution provides an integrated firewall, IPSec virtual private network (VPN), intrusion prevention, and antivirus for end-to-end security in a single solution. With Check Point Express CI, companies also receive SmartCenter™ Express, the industry standard for centralized security management, to reduce the cost and complexity of managing security.



PRODUCT DESCRIPTION

Check Point Express CI™ is an integrated security gateway that makes the highest level of security affordable for mid-sized businesses. It combines a firewall, VPN, intrusion prevention, antivirus, and centralized management in one solution.

PRODUCT FEATURES

- Market leading, enterprise-class security
- Integrated firewall, IPSec VPN, intrusion prevention, and antivirus
- SmartCenter™ management for all aspects of security

PRODUCT BENEFITS

- Provides the highest level of security against increasingly sophisticated worms, viruses, and other Internet-based attacks
- Reduces costs and administrative burden with streamlined, centralized security management
- Provides continuous protection through automatic antivirus signature and attack protection updates
- Simplifies remote access and site-to-site VPNs



Check Point protects every part of your network—perimeter, internal, Web—to keep your information resources safe, accessible, and easy to manage.

INTEGRATED SECURITY FOR MAXIMUM PROTECTION

To lower the cost of security for resource-strapped mid-sized businesses and to secure the network, Check Point Express CI includes the market-leading FireWall-1®; intrusion prevention powered by the most intelligent inspection technologies available—Application Intelligence™, Web Intelligence™, and the patented Stateful Inspection; and antivirus protection to defend against viruses, Trojan horses, and more.

Built-in active defense against attacks

SmartDefense™ technology, as part of Check Point Express CI, actively protects organizations from known and unknown network- and application-layer attacks. Check Point Express CI prevents network-borne worms from entering the network and minimizes the need for a company to make capital investments in standalone intrusion prevention systems (IPS). To maintain a preemptive security environment and ensure networks stay safe from new attacks, the optional SmartDefense Service provides ongoing and automatic updates to defenses, policies, and other security elements. Web Intelligence, an optional component of Check Point Express CI, provides integrated protection for Web applications against common hacking techniques such as SQL injection, cross-site scripting, and directory traversal. Included in Web Intelligence is the patent-pending Malicious Code Protector™, a revolutionary technology that detects and blocks buffer overflow attacks and other malicious executable code that target Web servers. Web Intelligence stops both known and unknown attacks, offering preemptive attack protection.

Integrated antivirus

Worms and other attacks often enter the network disguised within attachments to emails or files downloaded by users, automatically attacking all nearby computers once opened. Check Point Express CI complements the SmartDefense technology with network-based antivirus to ensure that these types of inbound and outbound content are free from worms or viruses. Companies can choose to scan email (SMTP), Web (HTTP), and FTP traffic in real-time for possible threats disguised within legitimate content. Check Point Express CI is configurable to either scan or block specific types of files—such as .zip or .exe files—upon detecting them at the gateway.

The SmartDefense Service provides antivirus updates to make sure organizations stay up-to-date against the latest attacks and variants. Organizations may have a central server download updates and automatically distribute them to remote locations or have each Check Point Express CI gateway check independently. These update checks are configured to occur at regular intervals according to an administrator-defined security policy.

Flexible application support

Stateful Inspection examines more than 150 predefined applications, services, and protocols out of the box, ensuring that the vast majority of applications used by businesses are free of threats when entering the network. Examples include

- Voice over IP (VoIP): Check Point Express CI offers comprehensive VoIP protocol support to secure critical business communications.
- Peer-to-peer and instant messaging: Check Point Express CI provides security for these applications by inspecting their content or preventing them from entering the corporate network. File-trading applications can also be stopped at the VPN-1® Express CI gateway.

QUICK VPN DEPLOYMENT

The Internet environment demands information access for remote employees, branch offices, or partners who may be located anywhere. Check Point Express CI delivers an integrated IPsec VPN to provide flexibility and simplicity.

One-Click VPNs

With One-Click VPN technology, in a single step organizations can set the security parameters for an entire VPN, including site-to-site and remote access. The security administrator simply defines all Check Point Express CI endpoints in a community, and VPNs are automatically enabled among all gateways or between a gateway and a remote user. As new sites are added to the community, they automatically inherit the appropriate properties and can immediately establish secure IPsec sessions with the rest of the VPN community.

Flexible authentication

Check Point secure VPN solutions offer a multitude of authentication options, including token cards, RADIUS, and TACACS/TACACS. In addition, OpenPKI ensures that Check Point secure VPN solutions are compatible with leading PKI solutions from vendors such as Entrust, Verisign, and Baltimore Technologies, enabling organizations to manage very large IPsec VPN deployments. VPN-1 Pro features a unique Hybrid Mode Authentication that allows organizations to deploy IPsec VPNs while leveraging existing authentication schemes such as Secure ID tokens.

Organizations that want to implement strong authentication out of the box can use Check Point One-Click Certificates. With an Internal Certificate Authority included with VPN-1 Pro, X.509 digital certificates can be issued to VPN-1 gateways and VPN-1 SecureClient™ users. One-Click Certificates provide industry-standard, two-factor authentication without the complexity and expense of PKI systems.

Support for multiple remote access technologies

Because every business has a unique blend of requirements for remote access, Check Point Express supports a wide range of VPN clients.

VPN-1 SecuRemote

VPN-1 SecuRemote®, included with Check Point Express, encrypts and authenticates data to protect against eavesdropping and data tampering.

VPN-1 SecureClient

VPN-1 SecureClient extends VPN-1 SecuRemote features with a centrally managed personal firewall and advanced management capabilities.

Microsoft L2TP VPN Clients

For Microsoft users, Check Point Express CI can provide secure remote access using a Microsoft Windows L2TP VPN client.

Data privacy

In today's regulatory environment, data privacy is paramount. Check Point Express CI applies the strongest encryption algorithms available for data in transit, protecting against privacy breaches. These include

- Advanced Encryption Standard 128-256 bit
- Triple DES 56-168 bit
- Secure Socket Layer

SIMPLE, CENTRALIZED SMART MANAGEMENT

Check Point Express CI comes with SmartCenter Express, part of Check Point's SMART (Security Management Architecture) portfolio of solutions, to manage VPN-1 Express CI gateways. It centrally stores and distributes the security policy to the entire security infrastructure. Maintaining the security policy in a centralized location eliminates the need to maintain each VPN-1 Express CI gateway individually, thereby reducing administrative burden and errors.

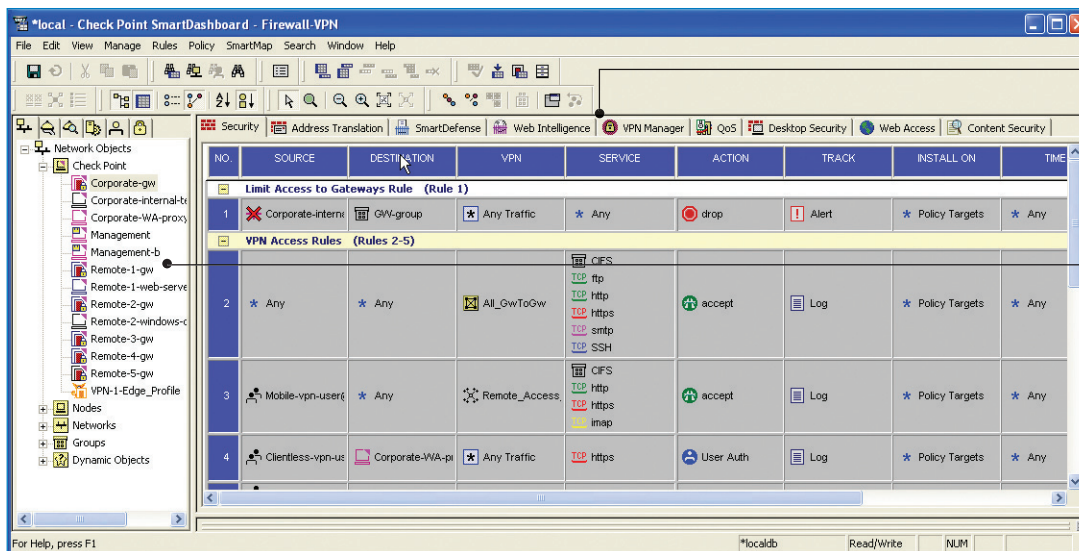
ROUND-THE-CLOCK BUSINESS CONTINUITY

Check Point Express CI is high-availability-ready to ensure that access to company resources is reliable. Multiple gateways may be deployed in a cluster to guarantee round-the-clock network availability. If the designated primary gateway becomes unreachable, all connections are seamlessly redirected to the remaining cluster members. Also, near-linear performance gains are achieved when additional gateways are added to the cluster.

In addition, a high-availability interface enables traffic to be routed to a secondary interface or ISP link if the primary interface becomes unavailable. Ongoing connections are maintained during failover.

Support for VPN QoS

Check Point FloodGate-1®, an optional module, shapes VPN traffic by assigning priority to business critical applications and users. It delivers optimized performance, enabling customers to migrate business traffic from expensive leased lines to Internet VPNs.



Firewall, VPN, intrusion prevention, and antivirus for all Check Point Express CI gateways are centrally managed.

All network objects—users, hosts, and more—are easily viewable and managed.

Check Point Express CI provides reliable, integrated security for businesses with up to 500 users and multiple locations.

ADDITIONAL CAPABILITIES

Check Point Express supports a number of different enforcement modules and add-ons.

Enforcement modules

Additional VPN-1 Express CI gateways secure and connect an additional branch office.

High-Availability-Ready VPN-1 Express CI gateways provide a seamless way to add greater resiliency to an existing security gateway.

Performance Accelerator Cards are plug-and-play PCI add-in cards that improve the performance of existing VPN-1 Express CI gateways.

ClusterXL® distributes traffic between clusters of gateways to provide performance scalability.

FloodGate-1 provides policy-based Quality of Service to optimize network performance by assigning priority to business-critical applications and end users.

Add-ons

SmartMap™ allows security managers to validate the integrity of their security by providing a detailed, graphical map of an organization's security deployment.

SmartUpdate™ delivers centralized software and license management for Check Point products to ensure that a consistent security policy is enforced throughout the enterprise network.

SmartDirectory™ enables Check Point Express CI to integrate with one or more LDAP-compliant directory servers.

SmartView Monitor™ enables powerful performance analysis by presenting graphical views of end-to-end performance metrics such as bandwidth, round-trip time, and packet loss.

SmartCenter Express Plus extends SmartCenter Express with SmartMap, SmartUpdate, SmartDirectory, SmartView Monitor, and SmartPortal—a Web-based tool to access and view the security policy through a browser.

SmartView Reporter™ is an optimal reporting system that delivers in-depth network security activity and event information from Check Point log data.

UserAuthority® provides integrated Web security, single sign-on, and identity management for eBusiness applications.

Web Intelligence provides Web application firewall technology for Check Point products.

VPN-1 Express CI gateways	
Supported On	Intel Pentium II 300 MHz or equivalent processor
Disk Space	4 GB
Memory	256 MB
SmartCenter Express	
Supported On	Check Point SecurePlatform, Nokia IPSO, Windows 2000 Server/2003 Server, Sun Solaris 8 (32/64 bit), Solaris 9 (64 bit), Red Hat Linux Enterprise 3.0
Disk Space	300 MB
Memory	256 MB
SmartDashboard	
Supported On	Windows 2000/2003/XP/ME/98, Sun Solaris
Disk Space	100 MB
Memory	256 MB
Remote Access Clients*	
Supported On	Windows 2000 /XP/2003/Pocket PC/Handheld PC 2000, Macintosh, Linux, Check Point SecurePlatform
Disk Space	20 MB
Memory	64 MB
CPU	Intel Pentium II 300+ MHz or equivalent
Disk Space	4 Gigabyte hard drive, supported NICS
Memory	256 MB minimum, 512 MB recommended

*VPN-1 SecuRemote, SecureClient, and Integrity SecureClient

For detailed information on supported platforms and system requirements, please refer to http://www.checkpoint.com/products/supported_platforms/platforms_appint.html.

©2004-2005 Check Point Software Technologies Ltd. All rights reserved. Check Point, AlertAdvisor, Application Intelligence, Check Point Express, the Check Point logo, ClusterXL, Cooperative Enforcement, ConnectControl, Connectra, CoSa, Cooperative Security Alliance, Eventia Analyzer, Firewall-1, Firewall-1 GX, Firewall-1 SecureServer, FloodGate-1, Hacker ID, IMsecure, INSPECT, INSPECT XL, Integrity, InterSpect, IQ Engine, Open Security Extension, OPSEC, Policy Lifecycle Management, Provider-1, Safe@Home, Safe@Office, SecureClient, SecureKnowledge, SecurePlatform, SecuRemote, SecureServer, SecureUpdate, SecureXL, SiteManager-1, SmartCenter, SmartCenter Pro, Smarter Security, SmartDashboard, SmartDefense, SmartLSM, SmartMap, SmartUpdate, SmartView, SmartView Monitor, SmartView Reporter, SmartView Status, SmartViewTracker, SofaWare, SSL Network Extender, TrueVector, UAM, User-to-Address Mapping, UserAuthority, VPN-1, VPN-1 Accelerator Card, VPN-1 Edge, VPN-1 Pro, VPN-1 SecureClient, VPN-1 SecuRemote, VPN-1 SecureServer, VPN-1 VSX, VPN-1 XL, Web Intelligence, ZoneAlarm, ZoneAlarm Pro, Zone Labs, and the Zone Labs logo, are trade-marks or registered trademarks of Check Point Software Technologies Ltd. or its affiliates. All other product names mentioned herein are trademarks or registered trademarks of their respective owners. The products described in this document are protected by U.S. Patent No. 5,606,668, 5,835,726 and 6,496,935 and may be protected by other U.S. Patents, foreign patents, or pending applications.

April 8, 2005 P/N 501760

Worldwide Headquarters
3A Jabotinsky Street, 24th Floor
Ramat Gan 52520, Israel
Tel: 972-3-753-4555
Fax: 972-3-575-9256
Email: info@checkpoint.com

U.S. Headquarters
800 Bridge Parkway
Redwood City, CA 94065
Tel: 800-429-4391; 650-628-2000
Fax: 650-654-4233
www.checkpoint.com



Check Point®
SOFTWARE TECHNOLOGIES LTD.
We Secure the Internet.